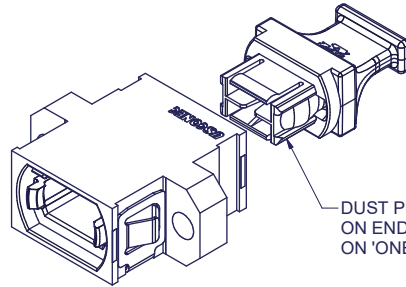
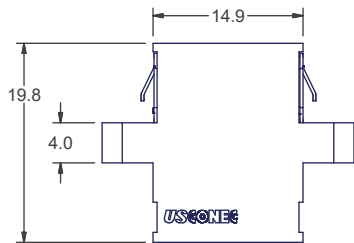
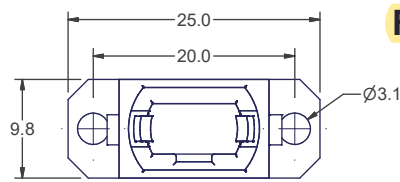
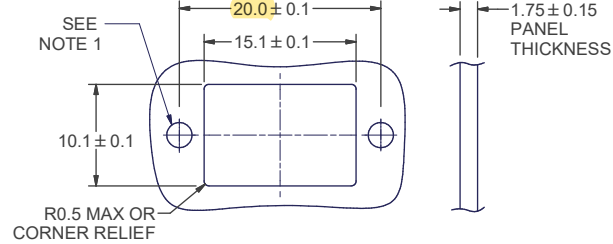


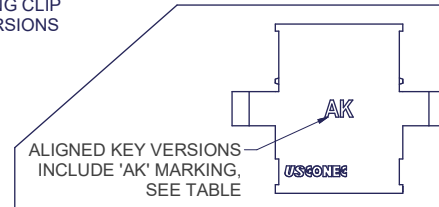
FULL FLANGE



DUST PLUG INSTALLED
ON END OPPOSITE SPRING CLIP
ON 'ONE DUST PLUG' VERSIONS



RECOMMENDED MOUNTING CUTOUT



NOTE:

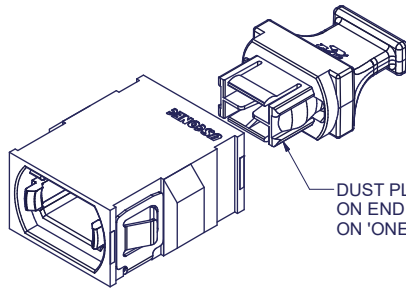
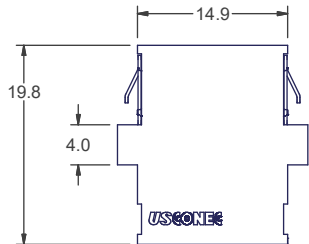
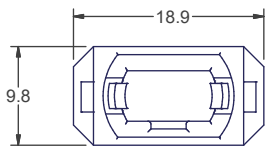
1. RECOMMEND USE OF M2.5 OR 4-40 SCREW, OR SCREW W/ NUT,
SCREW HEAD DIAMETER & NUT WIDTH ≤ 5mm.
(SCREW & NUT NOT PROVIDED).
RECOMMEND 2in-lbf TORQUE FOR SCREW
MOUNT APPLICATIONS.

FULL FLANGE

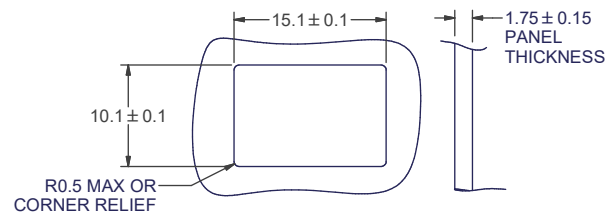
P.N. with One Dust Plug	P.N. with Two Dust Plugs	Color	Key Orientation
MTP-ADPT	MTP-ADPT-2	Black	Opposed
5306	12196	Gray	Aligned
6496	9220	Beige	Opposed
6531	9135	Blue	Opposed
7868	8852	Green	Opposed
7869	9218	Aqua	Opposed
13770	13771	Magenta	Opposed
15659	15660	Mustard	Opposed
16697	16698	Heather Violet	Opposed
16772	16773	Munsell Violet	Opposed
17852	17853	Yellow	Opposed
17872	17873	Red	Opposed
19451	19452	Lime	Opposed
19925	19926	White	Opposed
22366	22367	Aqua	Aligned
22368	22369	Lime	Aligned
22370	22371	Heather Violet	Aligned

REDUCED FLANGE

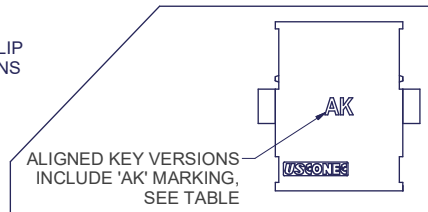
no screw



DUST PLUG INSTALLED
ON END OPPOSITE SPRING CLIP
ON 'ONE DUST PLUG' VERSIONS



RECOMMENDED MOUNTING CUTOUT



REDUCED FLANGE

P.N. with One Dust Plug	P.N. with Two Dust Plugs	Color	Key Orientation
MTP-RF-ADPT	12075	Black	Opposed
9574	12204	Aqua	Opposed
12035	12206	Gray	Aligned
12197	12202	Beige	Opposed
12198	12203	Green	Opposed
12200	12205	Blue	Opposed
13850	13851	Magenta	Opposed
15661	15662	Mustard	Opposed
16701	16703	Heather Violet	Opposed
16775	16776	Munsell Violet	Opposed
17854	17855	Yellow	Opposed
17874	17875	Red	Opposed
19453	19454	Lime	Opposed
19927	19928	White	Opposed
22372	22373	Aqua	Aligned
22374	22375	Lime	Aligned
22376	22377	Heather Violet	Aligned

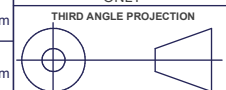
▲ DENOTES CRITICAL DIMENSION

PART	MATERIAL
ADAPTER BODY	POLYETHERIMIDE
SPRING CLIP	STAINLESS STEEL
DUST PLUG	POLYCARBONATE

USCONEC LTD. PROPRIETARY				
THIS DOCUMENT AND THE ASSOCIATED DATA CONTAIN RESTRICTED INFORMATION THAT IS USCONEC LTD. PROPERTY. DISCLOSE OR DUPLICATE FOR OTHERS ONLY AS AUTHORIZED BY USCONEC LTD.				
Material:		SEE TABLE AT LEFT		
REV.	DATE	DESCRIPTION	ECN	
U1	7/19/19	UPDATED ISO VIEWS W/ IMPROVED DUST PLUG	2233-mm	
U	7/23/19	RELEASE		
V1	12/16/19	ADDED "AK" MARKING TO ALIGNED KEY VERSIONS		
V	2/14/20	RELEASE	2262-mm	
W	5/11/20	ADD PIN'S 22366, 22367, 22368, 22369, 22370, 22371, 22372, 22373, 22374, 22375, 22376 & 22377 TO TABLES; ADD'D 'AK' NOTE		

CUSTOMER DRAWING

DIMENSIONS FOR REFERENCE ONLY



METRIC/mm

USCONEC

Hickory, NC
800-769-0944
www.usconec.com

TITLE
**ADAPTER, MTP®, STD,
FULL & REDUCED FLANGE**

SIZE A3	S&M Part No.: SEE TABLE	DWG NO. C9857	REV W
SCALE N.T.S.	Drafter J. WAKJIRA	Date: 3/23/2009	SHEET 1 OF 1